



Orion's Group Strategy



3

Orion

Embodied Carbon Projects

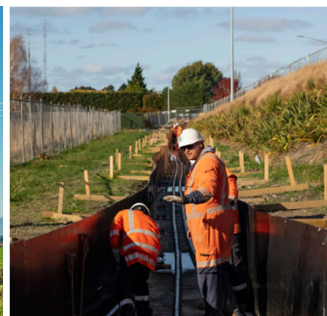
LCA Orion Poles



Burdon's Road OH



Belfast ZS



4

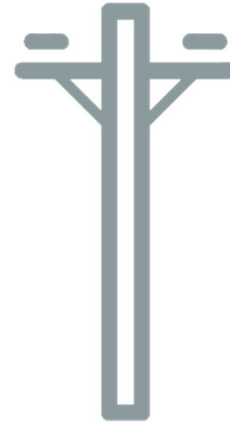
Orion

LCA of Orion Poles

To understand our environmental impact

To identify where improvements can be made

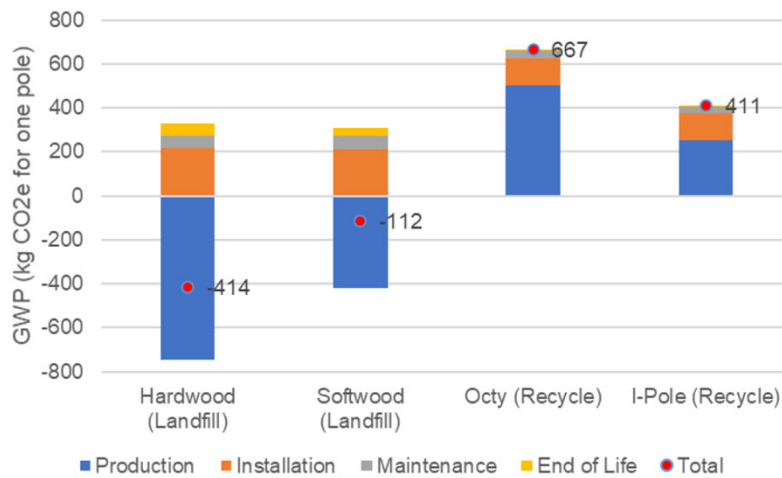
To understand the different impacts of end of life use



5

Orion

Cradle-to-grave GWP results

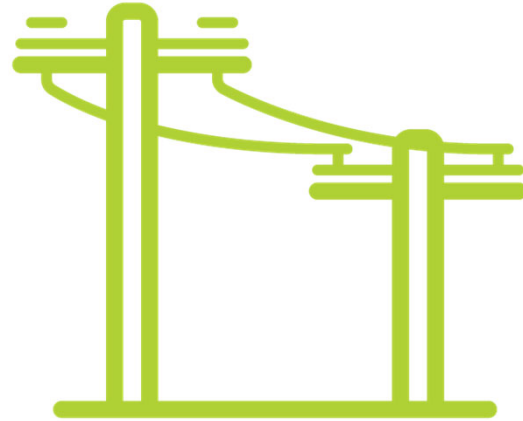


6

Orion

Conclusions

- ✓ Wooden poles are carbon negative when reused or recycled
- ✗ Concrete poles are the greatest contributor for carbon mostly due to the production stages
- ✗ All benefits to the wooden poles are lost when burning is the end of life option



7

Orion

Future Directions

The installation phase is where we can create the greatest impact toward reducing our carbon

Production and installation



Discuss lower-carbon concrete mixes with suppliers (GGBS).

10% reduction in fuel over next 10 years



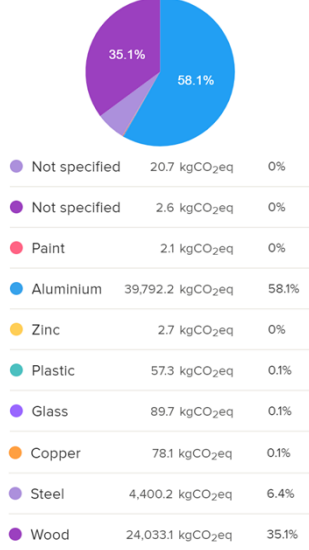
Carbon is a priority, and we should encourage the reuse of timber poles over burning at end of life

8

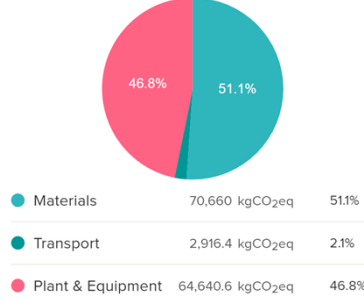
Orion

Embodied Carbon Burdon's Rd Overhead

Materials Total 68,478.7 kgCO₂eq



Scope Total 138,217.1 kgCO₂eq



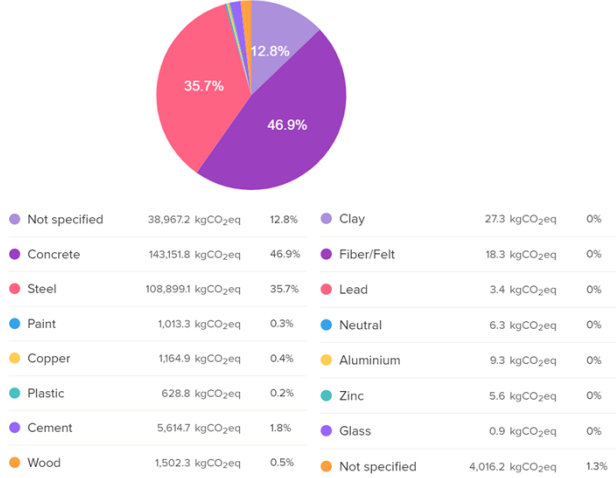
Carbon Hotspots were Construction Plant (47%), Aluminum (29%) and Wooden Poles (17% - assuming no re-use at end-of-life).

9

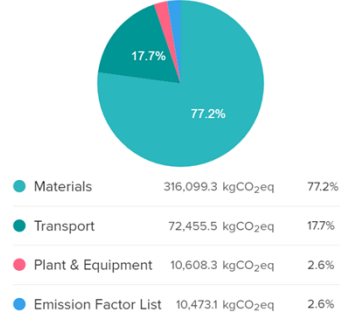
Orion

Embodied Carbon Belfast Zone Substation

Materials Total 305,029.3 kgCO₂eq



Scope Total 409,636.2 kgCO₂eq



Carbon Hotspots were Steel (36%), Concrete (24%), Transformers (24%), Construction Transport (12%)

10

Orion

Orion

oriongroup.co.nz | Thank you

Questions?