

## **SAFETY ALERT**

# **Shared Learning's**

### **INCIDENT TITLE:**

Blade Bearing Cover Fell From Turbine

### **TIME AND DATE OF INCIDENT:**

Wednesday 8<sup>th</sup> February 2017

### **INCIDENT DETAIL :**

After attending the public viewing area on 8<sup>th</sup> February, Meridian was contacted by the farmer after he noticed a large item lying on the side of the road.

The item was thought to have come from the turbine.

The farmer left it where he found the item and confirmed the site was clear of all visitors.

The faults team conducted an inspection of the turbine the following morning and discovered the item was the blade bearing cover.

### **LEARNINGS AND RECOMMENDATIONS FROM THIS INCIDENT:**

- The bolts used during construction to secure the blade bearing cover were too short. This information has been reported back to the OEM
- Checking of bolts was not included in the maintenance checks. This has since been altered.
- Items that have the potential to come loose have been identified and regular inspections of these items is scheduled.

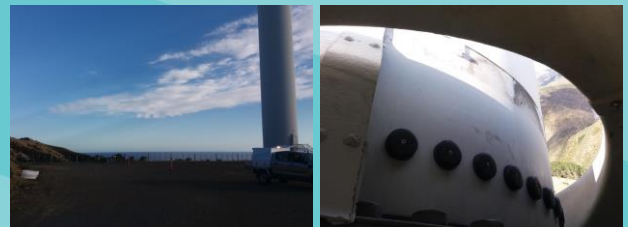
### **INITIAL RESPONSE AND INVESTIGATION OUTCOMES :**

The turbine was stopped. The Generation Controller and On Call Technicians were informed. The Duty Technician attended site to close the gates and establish a drop zone around the turbine.

Site Technicians were advised to remote stop the turbines as approaching and to conduct a thorough visual inspection for loose panels or fairings before entering the drop zone.

Full inspections have since been carried out on other turbines.

### **PHOTO:**



*Photos of blade bearing cover on the ground and missing from turbine blade*

The Corporate Safety and Health Team are currently working on systems to support the above learnings. If interested in viewing the full investigation report for this incident, it can be found in:

Safety Manager Id Number 704379. If you do not have access to Safety Manager contact a member of the Corporate Safety Team or Wind Maintenance & Development team



meridian