



# Heads Up

**SAFETY  
ALERT**

## **WHAT HAPPENED?**

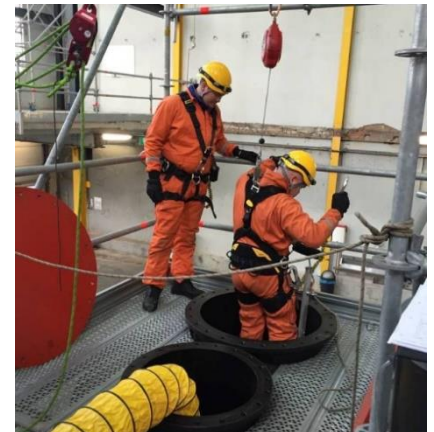
In February 2019, on one particular occasion during confined space work on Unit 1, our protocols put in place to keep us all safe at work were not adhered to.

## **SAFETY OBSERVER DUTIES AND RESPONSIBILITIES**

In all situations a Safety Observer must be posted outside the confined space when work is performed, and must remain on duty throughout the duration of the entry, unless relieved by another person of equivalent experience and training. This individual should be provided with the same level of protection (e.g. respirator, coveralls), worn by those within the confined space so that they can safely and competently perform their duties.

The specific duties of the Safety Observer include the following:

- Maintain an accurate count of all persons within the confined space
- Monitor activities inside and outside the space to determine whether it remains safe for the entrants to remain inside.
- Be competent in gas detection procedures and protocols to ensure safety of workers in the space.
- Enforce the confined space permit and comply with its control measures including the rescue plan.
- Maintain effective and continuous contact with ALL the people working inside the space using radio, agreed hand signals, horn lights etc.
- Prevent entry of unauthorised persons into the space
- Order evacuation of the confined space if necessary
- Initiate the rescue plan and notify emergency services
- In an emergency, if required, the Safety Observer should attempt to remove the entrants from the confined space using tripods, hoists and lifelines. The Safety Observer must NEVER enter the confined space. Only properly trained and equipped emergency rescue personnel may enter the confined space to make a rescue (Over 60% of workers who die in confined spaces are would-be rescuers).



**THANKS FOR YOUR COMMITMENT TO A SAFER WORKPLACE**